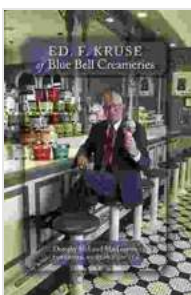


Ed Kruse of Blue Bell Creameries: The Man Behind the Sweetest Story in Texas

Ed Kruse, the founder of Blue Bell Creameries, is a true American success story. From humble beginnings, he built a company that became a Texas institution and one of the most beloved ice cream brands in the country. His story is one of hard work, determination, and a deep love of ice cream.



Ed. F. Kruse of Blue Bell Creameries by Randall E. Stross

★★★★★ 5 out of 5

Language : English
File size : 11855 KB
Text-to-Speech : Enabled
Screen Reader : Supported
Enhanced typesetting : Enabled
Word Wise : Enabled
Print length : 207 pages



Early Life and Career

Ed Kruse was born in Brenham, Texas, in 1926. His parents were farmers, and he grew up working on the family farm. After graduating from high school, Kruse served in the U.S. Army during World War II. After the war, he returned to Texas and enrolled at Texas A&M University, where he studied dairy science.

In 1950, Kruse graduated from Texas A&M and got a job as a field representative for a dairy company. In this role, he traveled around Texas,

helping farmers improve their milk production. It was during this time that Kruse began to develop his own ideas for making ice cream.

Founding Blue Bell Creameries

In 1955, Kruse founded Blue Bell Creameries in Brenham, Texas. The company started out with just a few employees and a small production facility. However, Kruse was determined to make Blue Bell the best ice cream in Texas. He used high-quality ingredients and developed unique flavors that quickly became favorites of Texans.

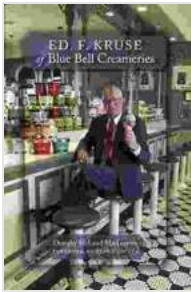
Under Kruse's leadership, Blue Bell Creameries grew rapidly. By the 1970s, the company had become one of the largest ice cream manufacturers in the United States. Blue Bell ice cream was sold in grocery stores and restaurants across the country. Kruse's success was due in part to his commitment to quality and customer service.

A Legacy of Success

Ed Kruse retired from Blue Bell Creameries in 1995. However, he remained active in the company until his death in 2014. Kruse was a beloved figure in Texas, and his legacy continues to live on. Blue Bell Creameries is still one of the most popular ice cream brands in the country, and it continues to use Kruse's original recipes.

Ed Kruse's story is an inspiration to entrepreneurs everywhere. He showed that with hard work, determination, and a love of what you do, anything is possible. Blue Bell Creameries is a testament to Kruse's legacy, and it continues to bring joy to people all over Texas.

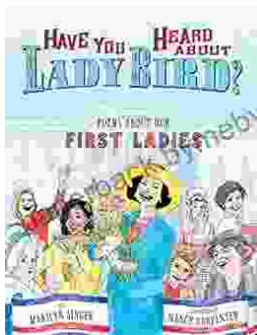
Ed Kruse was a true pioneer in the ice cream industry. He founded Blue Bell Creameries, which has become one of the most beloved ice cream brands in the country. Kruse's success was due to his commitment to quality, customer service, and a deep love of ice cream. His legacy continues to live on, and Blue Bell Creameries is still bringing joy to people all over Texas.



Ed. F. Kruse of Blue Bell Creameries by Randall E. Stross

★★★★★ 5 out of 5

- Language : English
- File size : 11855 KB
- Text-to-Speech : Enabled
- Screen Reader : Supported
- Enhanced typesetting : Enabled
- Word Wise : Enabled
- Print length : 207 pages



Poems About Our First Ladies: A Journey into the Lives and Legacies of America's Extraordinary Women

Immerse Yourself in a Literary Tapestry Woven with the Threads of History Prepare to be captivated by 'Poems About Our First Ladies,' a...



Embark on an Epic Adventure: The Colorado Trail 9th Edition

Unveiling the Treasures of the Colorado Trail Prepare to immerse yourself in the breathtaking wilderness of Colorado as you embark on an extraordinary hiking expedition...